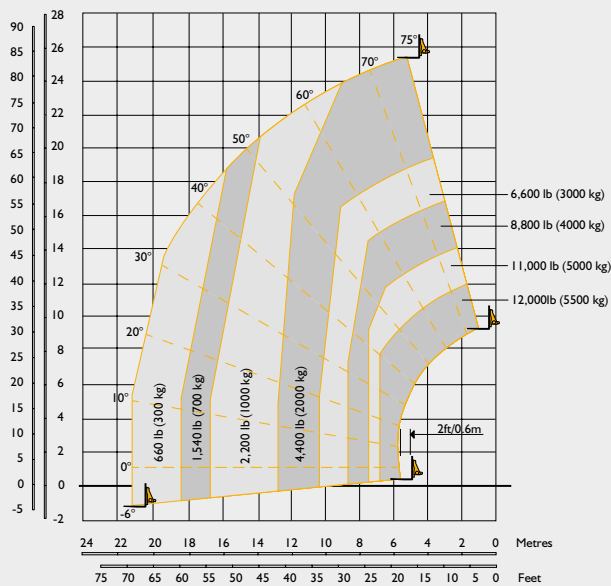
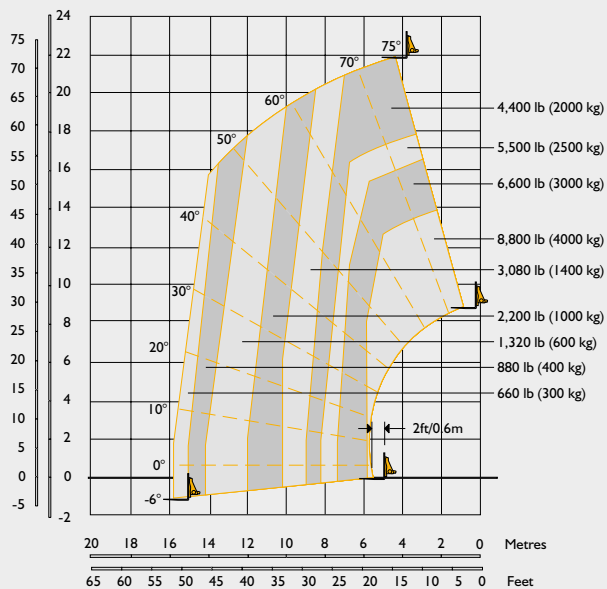


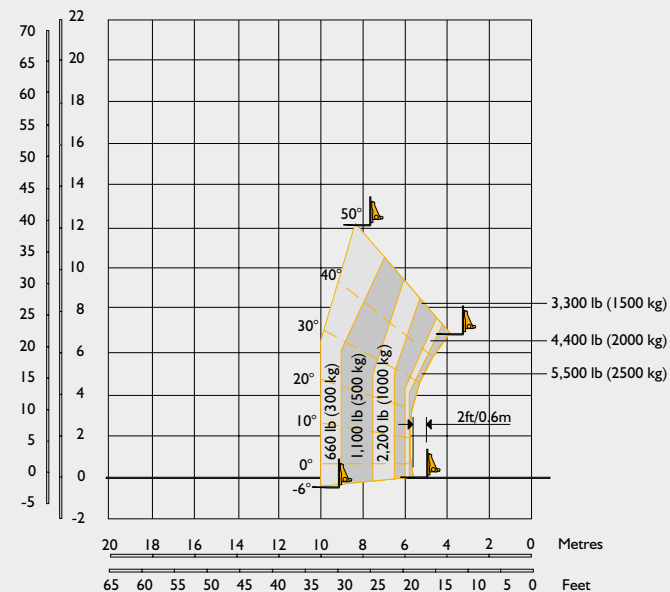
LIFT PERFORMANCE – FORKS, 360° WITH OUTRIGGERS DEPLOYED



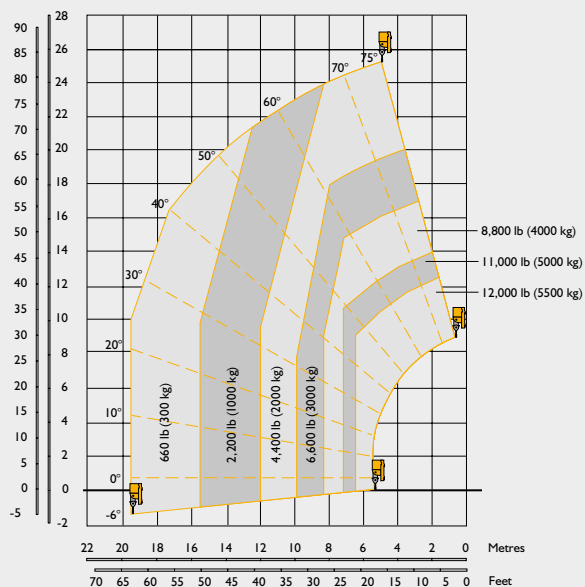
LIFT PERFORMANCE – FORKS, STRAIGHT AHEAD ON TIRES



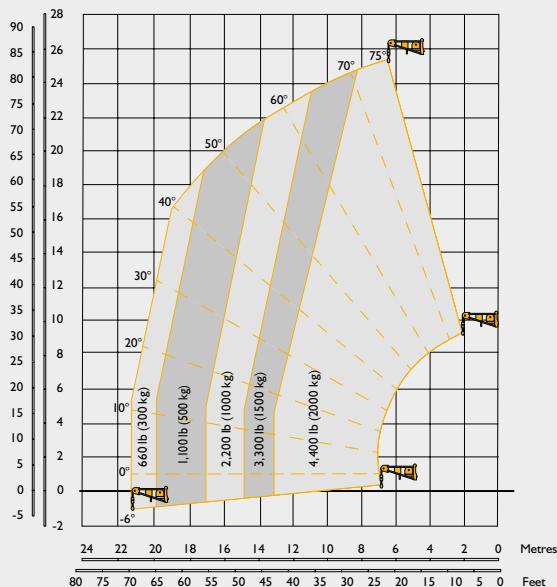
LIFT PERFORMANCE – FORKS, 360° ON TIRES



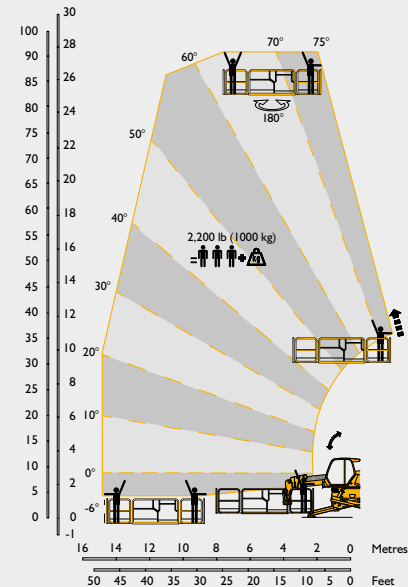
LIFT PERFORMANCE – 5.5T WINCH, 360° WITH OUTRIGGERS DEPLOYED

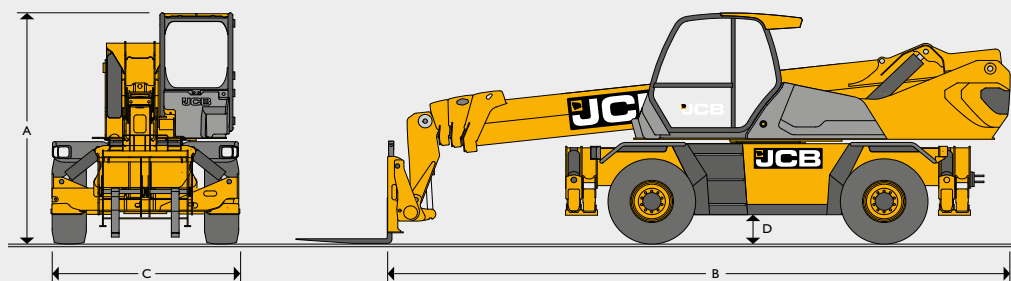


LIFT PERFORMANCE – 2T-6 FT JIB WINCH, 360° WITH OUTRIGGERS DEPLOYED



LIFT PERFORMANCE – 2200 LB SLEWING MAN PLATFORM WITH OUTRIGGERS DEPLOYED




**DIMENSIONS**

A	Overall height	ft-in (m)	10-1 (3.08)
B	Overall length	ft-in (m)	26-6 (8.09)
C	Overall width	ft-in (m)	8-0 (2.45)
D	Ground clearance	in (cm)	13 (35)
	Max lift height	ft-in (m)	83-7 (25.5)
	Max reach	ft-in (m)	70-2 (21.4)
	Max lift capacity	lb (kg)	12,125 (5500)
	Capacity at max height	lb (kg)	4,400 (2000)
	Capacity at max reach	lb (kg)	660 (300)
	Overall weight	lb (kg)	42,770 (19400)
	Front axle unladen weight (boom retracted and lowered)	lb (kg)	19,092 (8660)
	Rear axle unladen weight (boom retracted and lowered)	lb (kg)	23,678 (10740)
	Turning radius (over tires)	ft-in (m)	14-0 (4.29)

**ENGINE**

Type		JCB ECOMax T4F
Displacement	litres	4.8
Gross power	hp (kW)	145 (108) @ 2200rpm
Max torque	Nm	560 @ 1500rpm
Cylinders		4 in line
Fuel		Diesel direct injection turbocharged
Fuel tank	gal (l)	50 (190)
DEF tank	gal (l)	7 (26)
Gradeability		40%
Batteries	volts	2 x 12
Cooling system		Water – intercooler

**TRANSMISSION AND HYDRAULICS**

Transmission model		Bosch Rexroth
Transmission type		Two-speed hydrostatic
Drive wheels		4-wheel drive
Steering mode		4-wheel steer – 3 steering modes

**HYDRAULICS**

Type		Variable displacement pump electronically controlled with variable displacement motor
Flow rate	gal/min (l/min)	42 (160)
Movement control		2 servo electric joysticks
Operating system pressure	psi (bar)	4206 (290)

**PERFORMANCE**

Rotation		Continuous 360° rotation of turret mounted on external slew ring with in cab manual slew lock
Max travel speed	mph (kph)	25 (40)

**AXLES**

Type		Dana Spicer – with epicyclic reduction gear
Model		213
Oscillation		±8° oscillation with automatic hydraulic lock out on rear axle

**BRAKES**

Type		Power brakes hydraulically activated, oil-immersed multi-disc type on each axle
Rear axle		SAHR park brake

**OUTRIGGERS**

Type		4x telescopic outriggers with one touch auto deploy/level/retract
------	--	---

**LOAD MANAGEMENT SYSTEM**

Boom capacity and outrigger function load management system with RFID for attachment recognition

7" screen with rotary controller

Programmable envelope limits

5 configurable speed profiles

**CARRIAGE**

Type		Q-Fit carriage
Attachment recognition		RFID

**TIRES**

Type		445 / 65 R22.5
------	--	----------------