

1055

TELEHANDLER



Performance

| | | |
|-----------------------------|-----------|-----------|
| Rated Capacity | 4,536 kg | 10,000 lb |
| Maximum Lift Height | 16.76 m | 55 ft |
| Load at Max Height | 2,268 kg | 5,000 lb |
| Maximum Forward Reach | 12.8 m | 42 ft |
| Load at Max Reach | 1,361 kg | 3,000 lb |
| Frame Leveling | 10° | |
| Lift Speed (boom retracted) | | |
| Up | 14 sec | |
| Down | 11 sec | |
| Boom Speed | | |
| Extended | 16 sec | |
| Retracted | 15 sec | |
| Top Travel Speed (4-Speed) | 32 kph | 20 mph |
| Drawbar Pull (loaded) | 113 kN | 25,400 lb |
| Outside Turning Radius | 4.3 m | 14 ft |
| Operating Weight | 14,315 kg | 31,559 lb |

Standard Specifications

Engine

| | | |
|---------------------------|-----------------|--------------|
| Make and Model | Cummins QSF3.8L | |
| No. of Cylinders | 4 | |
| Displacement | 3.8 L | 231.9 cu in. |
| Gross Power Basic | 96 kW | 130 hp |
| Maximum Torque @ 1500 rpm | 488 Nm | 360 lb-ft |
| Fuel Tank Capacity | 145 L | 38.3 gal |

Transmission

Powershift 4-speed forward and 3-speed reverse.

Axles

Trunnion mounted planetary 55° steer axles. Integral steer cylinder. High bias limited slip differential on front axle.

Brakes

Service brakes are inboard wet disc brake on front and rear axles. Parking brakes are wet disc spring-applied hydraulic release on front axle.

Tires

| | |
|----------|----------------------|
| Standard | 400/75-28 |
| Optional | Foam-Filled or Solid |

Cab

- Certified ROPS/FOPS structure
- Horn
- Tilt & declutch on joystick
- Adjustable seat
- Single joystick controls
- Anti-theft

Steering 4-Wheel

Hydraulic power steering with manual backup. Operator selectable 4-wheel circle, 4-wheel crab, 2-wheel front.

Instruments

- Volt meter
- Engine oil pressure gauge
- Fuel gauge
- Hourmeter
- Temperature gauge

Hydraulic System-Implement

| | | |
|--|-------|----------|
| Capacity | 184 L | 48.6 gal |
| Load sense piston pump. Auxiliary hydraulics used for all attachments equipped with cylinders or other hydraulic components. | | |

Accessories & Options

- Enclosed Cab
- Auxiliary Electrics
- Road Lights
- Air Conditioning
- Work Lights
- Rotating Beacon
- Hydraulic Coupler
- Fenders
- Brick Guards
- Arctic Package
- Multi-Function Display with Reversing Camera
- Ride Control
- Reverse Sensing System
- Boom Brushes
- Secondary Steering
- Wiper Package

Attachments

| | | |
|--------------------------------|--|---|
| Standard Carriage | 1.3 m 1.5 m 1.8 m | 50 in. 60 in. 72 in. |
| Side-Tilt Carriage | 1.3 m 1.5 m 1.8 m | 50 in. 60 in. 72 in. |
| Swing 90° or 180° Carriage | 1.8 m | 72 in. |
| Dual Fork Positioning Carriage | 1.3 m | 50 in. |
| Side-Shift Carriage | 1.3 m | 50 in. |
| Tower | 2.4 m | 8 ft |
| Tower with Side Tilt | 2.4 m | 8 ft |
| Pallet Forks | 60 mm x 102 mm x 1.2 m 60 mm x 127 mm x 1.2 m 51 mm x 152 mm x 1.8 m | 2.36 in. x 4 in. x 48 in. 2.36 in. x 5 in. x 48 in. 2.00 in. x 6 in. x 72 in. |
| Lumber Forks | 51 mm x 178 mm x 1.5 m 60 mm x 152 mm x 1.5 m | 2.00 in. x 7 in. x 60 in. 2.36 in. x 6 in. x 60 in. |
| Cubing Forks | 51 mm x 51 mm x 1.2 m | 2 in. x 2 in. x 48 in. |
| Fork Extensions | 2.3 m | 90 in. |
| Material Bucket | 1.8 m, 0.76 m³ 2.4 m, 1.15 m³ 2.6 m, 1.53 m³ | 72 in., 1.0 cu yd 96 in., 1.5 cu yd 102 in., 2.0 cu yd |
| Grapple Bucket | 2.4 m, 1.34 m³ | 96 in., 1.75 cu yd |
| Truss Boom | 0.9 m, 1,814 kg Capacity | 3 ft (winch), 4,000 lb Capacity |
| Truss Boom | 3.7 m, 907 kg 4.6 m, 907 kg 3.7 m, 907 kg | 12 ft, 2,000 lb 15 ft, 2,000 lb 12 ft with winch, 2,000 lb |
| Fork Mounted Work Platform | 1.8 m, 2,722 kg Capacity | 8 ft, 6,000 lb Capacity |
| Pipe Grapple | 2.4 m, 2,722 kg Capacity | 72 in., 6,000 lb Capacity |
| Bucket-Fork Mounted | 1.5 m, 1.0 m³ | 60 in., 1.3 cu yd |
| Material Handling Arm | 1,814 kg Capacity | 4,000 lb Capacity |
| Trash Hopper | 1.8 m, 1.5 m³ | 72 in., 1.9 cu yd |
| Lifting Hook-Fork Mounted | | |
| Lifting Hook-Coupler Mounted | | |

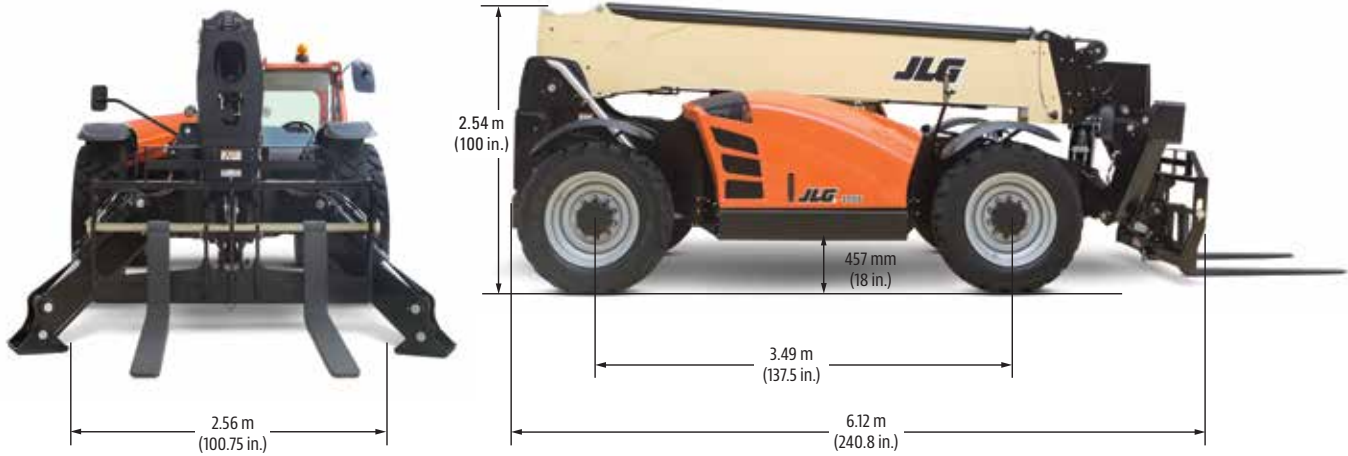
1055

TELEHANDLER

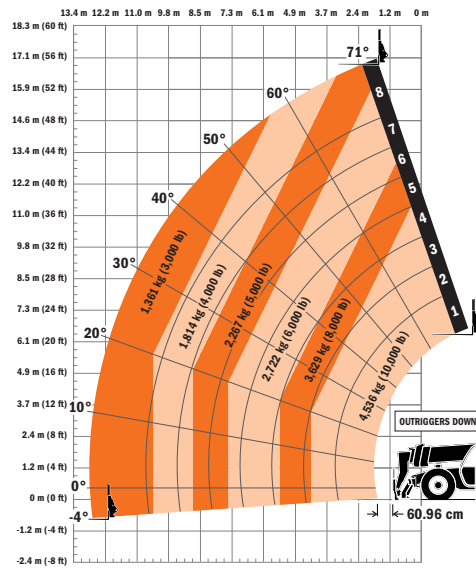
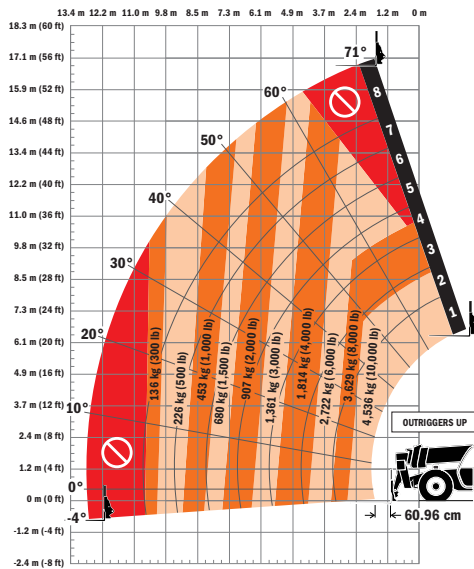


Dimensions

All dimensions are approximate.



Load Chart



The JLG "1 & 5" Warranty

JLG Industries, Inc. backs its products with its exclusive "1 & 5" Warranty. We provide coverage on all products for one (1) full year, and cover all specified major structural components for five (5) years. Due to continuous product improvements, we reserve the right to make specification and/or equipment changes without prior notification. This machine meets or exceeds applicable OSHA Regulations in 29 CFR 1910.67, 29 CFR 1926.453, ANSI A92.5-2006, and CSA Standard CAN3-B354.2-M82, as originally manufactured for intended applications.

Part No.: 3132243LA
0915
Printed in USA

JLG Industries, Inc.
1 JLG Drive
McConnellsburg, PA 17233-9533
Telephone 717-485-5161
Toll-free in US 877-JLG-LIFT
Fax 717-485-6417
www.jlg.com

An Oshkosh Corporation Company